

TECHNICAL SPECIFICATIONS

HOOK 4



TECHNICAL DATA

HOOK 4			21	23	25	27	29
CELLS	NUMBER		52	52	52	52	52
	CLOSED		8	8	8	8	8
	BOX	m ²	23	23	23	23	23
FLAT	AREA	m ²	21	23	25	27	29
	SPAN	m	10,65	11,15	11,62	12,08	12,51
	ASPECT RATIO		5,4	5,4	5,4	5,4	5,4
PROJECTED	AREA	m ²	17,85	19,55	21,25	22,95	24,65
	SPAN	m	8,45	8,84	9,22	9,58	9,93
	ASPECT RATIO		4	4	4	4	4
FLATTENING		%	15%	15%	15%	15%	15%
CORD	MAXIMUM	m	2,47	2,58	2,69	2,8	2,9
	MINIMUM	m	0,49	0,52	0,54	0,56	0,58
	AVERAGE	m	1,97	2,06	2,14	2,23	2,31
LINES	TOTAL METERS	m	208	218	227	236	245
	HEIGHT	m	6,5	6,8	7,09	7,36	7,63
	NUMBER		180	180	180	180	180
	MAIN		2/1/3/2	2/1/3/2	2/1/3/2	2/1/3/2	2/1/3/2
RISERS	NUMBER	4	A/A'/B/C	A/A'/B/C	A/A'/B/C	A/A'/B/C	A/A'/B/C
	TRIMS		NO	NO	NO	NO	NO
	ACCELERATOR	m/m	135	135	135	135	135
TOTAL WEIGHT	MINIMUM	kg	55	65	80	95	110
IN FLIGHT	MAXIMUM	kg	70	85	100	115	130
GLIDER WEIGHT		kg	4,3	4,7	4,9	5,3	5,6
CERTIFICATION		EN/LTF	B	B	B	B	B

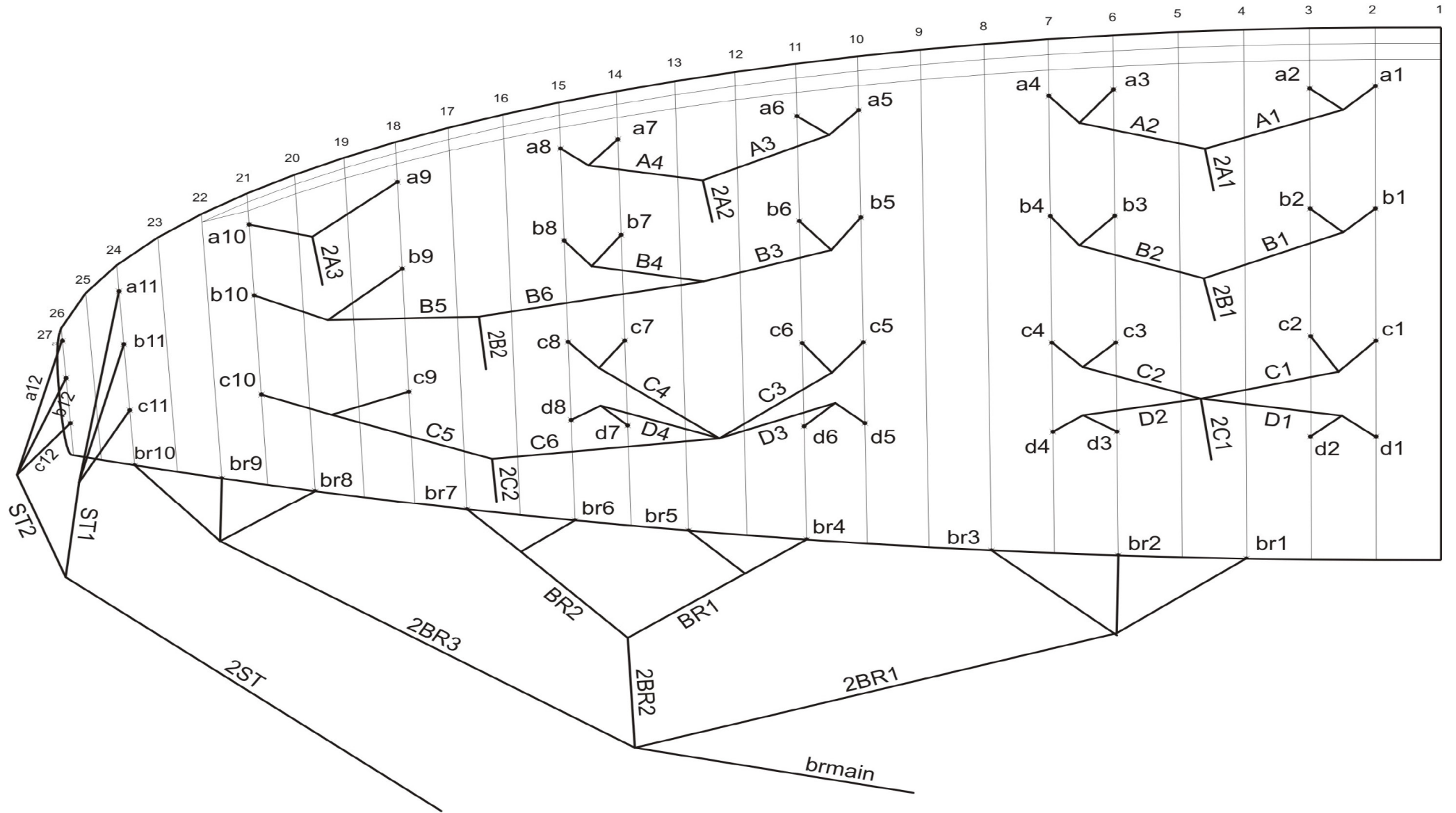
MATERIALS TECHNICAL DATA

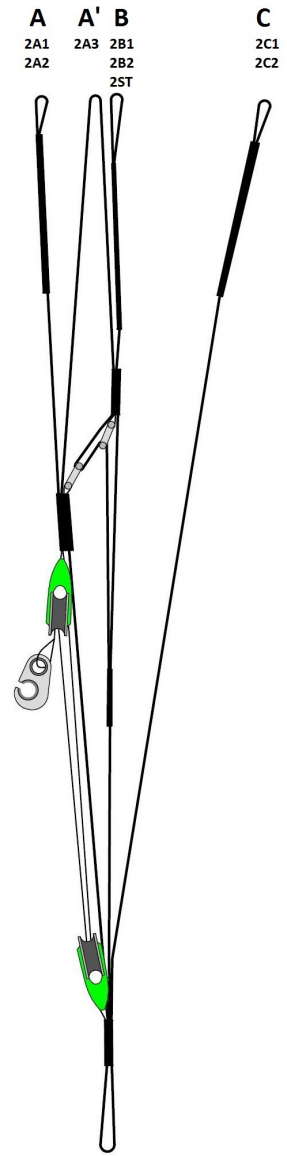
CANOPY	FABRIC CODE	SUPPLIER
UPPER SURFACE	9017 E25	PORCHER IND (FRANCE)
BOTTOM SURFACE	N20DMF	DOMINICO TEX CO (KOREA)
RIBS	9017 E29	PORCHER IND (FRANCE)
DIAGONALS	9017 E29	PORCHER IND (FRANCE)
LOOPS	LKI - 10	KOLON IND. (KOREA)
REINFORCEMENT LOOPS	W-420	D-P (GERMANY)
TRAILING EDGE REINFORCEMENT	MYLAR	D-P (GERMANY)
REINFORCEMENT RIBS	LTN-0.8 STICK	SPORTWARE CO. (CHINA)
THREAD	SERAFIL 60	AMAN (GERMANY)

SUSPENSION LINES	FABRIC CODE	SUPPLIER
UPPER CASCADES	DC - 060	LIROS GMHB (GERMANY)
UPPER CASCADES	TNL - 080	TEIJIM LIMITED (JAPAN)
UPPER CASCADES	DC - 100	LIROS GMHB (GERMANY)
MIDDLE CASCADES	TNL - 080	TEIJIM LIMITED (JAPAN)
MIDDLE CASCADES	TNL - 140	TEIJIM LIMITED (JAPAN)
MIDDLE CASCADES	TNL - 220	TEIJIM LIMITED (JAPAN)
MAIN	TNL - 080	TEIJIM LIMITED (JAPAN)
MAIN	TNL - 140	TEIJIM LIMITED (JAPAN)
MAIN	TNL - 280	TEIJIM LIMITED (JAPAN)
MAIN	TNL - 400	TEIJIM LIMITED (JAPAN)
MAIN BREAK	TNL - 400	TEIJIM LIMITED (JAPAN)
THREAD	SERAFIL 60	AMAN (GERMANY)

RISERS	FABRIC CODE	SUPPLIER
MATERIAL	WD103	COUSIN (FRANCE)
COLOR INDICATOR	PAD	TECNI SANGLES (FRANCE)
THREAD	V138	COATS (ENGLAND)
MAILLONS	4	ANSUNG PRECISION (KOREA)
PULLEYS	ID018041	RONSTAN (AUSTRALIA)

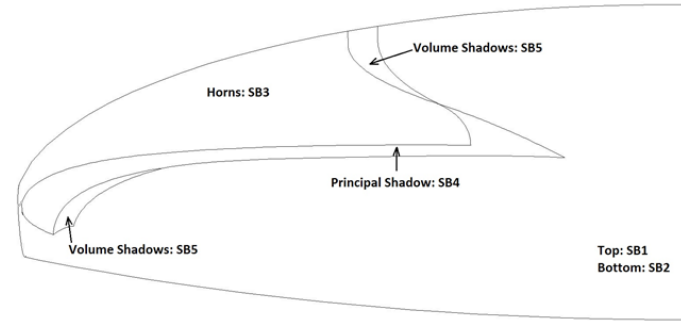
SUSPENSION PLAN





COLORS TECHNICAL DATA

LIMA	SB1	LIMA	MAIN TOP	REF: NK 375
	SB2	LIMA	MAIN BOTTOM	REF: NK 375
	SB3	GREY BLUE	HORNS	REF: NK 5405
	SB4	WHITE	PRINCIPAL SHADOW	REF: 001
	SB5	RUBI	VOLUME SHADOW	REF: 259



SANDIA	SB1	DRAGON RED	MAIN TOP	REF: 00636
	SB2	DRAGON RED	MAIN BOTTOM	REF: 00636
	SB3	LIMA	HORNS	REF: NK 375
	SB4	WHITE	PRINCIPAL SHADOW	REF: 001
	SB5	BLACK	VOLUME SHADOW	REF: 102



ZINNIA	SB1	GOLD	MAIN TOP	REF: 00939
	SB2	GOLD	MAIN BOTTOM	REF: 00939
	SB3	RUBI	HORNS	REF: 259
	SB4	WHITE	PRINCIPAL SHADOW	REF: 001
	SB5	BLACK	VOLUME SHADOW	REF: 102



CALYPSO	SB1	RUBI	MAIN TOP	REF: 259
	SB2	RUBI	MAIN BOTTOM	REF: 259
	SB3	WHITE	HORNS	REF: 001
	SB4	LIMA	PRINCIPAL SHADOW	REF: NK 375
	SB5	BLACK	VOLUME SHADOW	REF: 102



WING LOAD TECHNICAL DATA

HOOK 4

21		23		25		27		29	
P.T.V.	kg/m ²	P.T.V.	kg/m ²	P.T.V.	kg/m ²	P.T.V.	kg/m ²	P.T.V.	kg/m ²
55	= 2,62	65	= 2,83	80	= 3,20	95	= 3,52	110	= 3,79
56	= 2,67	66	= 2,87	81	= 3,24	96	= 3,56	111	= 3,83
57	= 2,71	67	= 2,91	82	= 3,28	97	= 3,59	112	= 3,86
58	= 2,76	68	= 2,96	83	= 3,32	98	= 3,63	113	= 3,90
59	= 2,81	69	= 3,00	84	= 3,36	99	= 3,67	114	= 3,93
60	= 2,86	70	= 3,04	85	= 3,40	100	= 3,70	115	= 3,97
61	= 2,90	71	= 3,09	86	= 3,44	101	= 3,74	116	= 4,00
62	= 2,95	72	= 3,13	87	= 3,48	102	= 3,78	117	= 4,03
63	= 3,00	73	= 3,17	88	= 3,52	103	= 3,81	118	= 4,07
64	= 3,05	74	= 3,22	89	= 3,56	104	= 3,85	119	= 4,10
65	= 3,10	75	= 3,26	90	= 3,60	105	= 3,89	120	= 4,14
66	= 3,14	76	= 3,30	91	= 3,64	106	= 3,93	121	= 4,17
67	= 3,19	77	= 3,35	92	= 3,68	107	= 3,96	122	= 4,21
68	= 3,24	78	= 3,39	93	= 3,72	108	= 4,00	123	= 4,24
69	= 3,29	79	= 3,43	94	= 3,76	109	= 4,04	124	= 4,28
70	= 3,33	80	= 3,48	95	= 3,80	110	= 4,07	125	= 4,31
		81	= 3,52	96	= 3,84	111	= 4,11	126	= 4,34
		82	= 3,57	97	= 3,88	112	= 4,15	127	= 4,38
		83	= 3,61	98	= 3,92	113	= 4,19	128	= 4,41
		84	= 3,65	99	= 3,96	114	= 4,22	129	= 4,45
		85	= 3,70	100	= 4,00	115	= 4,26	130	= 4,48

LINES TECHNICAL DATA

HOOK 4					21																			
REF.	MAT.	KG	COLOR	m/m	REF.	MAT.	KG	COLOR	m/m	REF.	MAT.	KG	COLOR	m/m	REF.	MAT.	KG	COLOR	m/m	REF.	MAT.	KG	COLOR	m/m
A					B					C					D					BRAKE				
a1	DC	60	WHT	345	b1	DC	60	WHT	340	c1	DC	60	WHT	295	d1	DC	60	WHT	359	br1	TNL	80	RED	1.447
a2	DC	60	WHT	284	b2	DC	60	WHT	280	c2	DC	60	WHT	209	d2	DC	60	WHT	277	br2	TNL	80	RED	1.131
a3	DC	60	WHT	307	b3	DC	60	WHT	301	c3	DC	60	WHT	235	d3	DC	60	WHT	306	br3	TNL	80	RED	970
a4	DC	60	WHT	326	b4	DC	60	WHT	322	c4	DC	60	WHT	279	d4	DC	60	WHT	346	br4	TNL	80	RED	716
a5	DC	60	WHT	320	b5	DC	60	WHT	318	c5	DC	60	WHT	275	d5	DC	60	WHT	337	br5	TNL	80	RED	590
a6	DC	60	WHT	281	b6	DC	60	WHT	266	c6	DC	60	WHT	200	d6	DC	60	WHT	258	br6	TNL	80	RED	565
a7	DC	60	WHT	272	b7	DC	60	WHT	270	c7	DC	60	WHT	214	d7	DC	60	WHT	277	br7	TNL	80	RED	628
a8	DC	60	WHT	287	b8	DC	60	WHT	280	c8	DC	60	WHT	239	d8	DC	60	WHT	296	br8	TNL	80	RED	852
a9	DC	60	WHT	1.490	b9	DC	60	WHT	1.332	c9	DC	60	WHT	903						br9	TNL	80	RED	781
a10	DC	60	WHT	1.351	b10	DC	60	WHT	1.300	c10	DC	60	WHT	925						br10	TNL	80	RED	771
a11	DC	60	WHT	889	b11	DC	60	WHT	878	c11	DC	60	WHT	977										
a12	DC	60	WHT	1.041	b12	DC	60	WHT	1.047	c12	DC	60	WHT	1.105										
A1	TNL	140	GREEN	1.871	B1	TNL	140	BLUE	1.840	C1	TNL	80	BLUE	1.197	D1	TNL	80	BLUE	1.232	BR1	TNL	80	RED	754
A2	TNL	140	GREEN	1.808	B2	TNL	140	BLUE	1.781	C2	TNL	80	BLUE	1.126	D2	TNL	80	BLUE	1.154	BR2	TNL	80	RED	739
A3	TNL	140	GREEN	1.731	B3	TNL	140	BLUE	1.579	C3	TNL	80	BLUE	1.124	D3	TNL	80	BLUE	1.147					
A4	TNL	140	GREEN	1.690	B4	TNL	140	BLUE	1.495	C4	TNL	80	BLUE	1.007	D4	TNL	80	BLUE	1.017					
					B5	TNL	80	BLUE	1.678	C5	TNL	140	BLUE	1.448										
					ST1	TNL	80	RED	840															
					ST2	TNL	80	RED	586															
					B6	TNL	220	BLUE	1.329	C6	TNL	220	BLUE	1.195										
2A1	TNL	280	GREEN	3.788	2B1	TNL	280	BLUE	3.736	2C1	TNL	280	BLUE	4.516						2BR1	TNL	80	RED	2.856
2A2	TNL	280	GREEN	3.834	2B2	TNL	280	BLUE	2.632	2C2	TNL	400	BLUE	3.355						2BR2	TNL	80	RED	2.241
2A3	TNL	140	GREEN	4.143	2ST	TNL	80	RED	3.557										2BR3	TNL	80	RED	2.574	
																			BRMAIN	TNL	280	RED	2.658	
																			POINT:				2.458	

LINES TECHNICAL DATA

HOOK 4					23																			
REF.	MAT.	KG	COLOR	m/m	REF.	MAT.	KG	COLOR	m/m	REF.	MAT.	KG	COLOR	m/m	REF.	MAT.	KG	COLOR	m/m	REF.	MAT.	KG	COLOR	m/m
A					B					C					D					BRAKE				
a1	DC	60	WHT	361	b1	DC	60	WHT	355	c1	DC	60	WHT	308	d1	DC	60	WHT	376	br1	TNL	80	RED	1.514
a2	DC	60	WHT	297	b2	DC	60	WHT	293	c2	DC	60	WHT	219	d2	DC	60	WHT	290	br2	TNL	80	RED	1.184
a3	DC	60	WHT	321	b3	DC	60	WHT	315	c3	DC	60	WHT	245	d3	DC	60	WHT	320	br3	TNL	80	RED	1.017
a4	DC	60	WHT	341	b4	DC	60	WHT	337	c4	DC	60	WHT	292	d4	DC	60	WHT	362	br4	TNL	80	RED	750
a5	DC	60	WHT	335	b5	DC	60	WHT	333	c5	DC	60	WHT	288	d5	DC	60	WHT	353	br5	TNL	80	RED	618
a6	DC	60	WHT	294	b6	DC	60	WHT	278	c6	DC	60	WHT	209	d6	DC	60	WHT	271	br6	TNL	80	RED	591
a7	DC	60	WHT	284	b7	DC	60	WHT	282	c7	DC	60	WHT	224	d7	DC	60	WHT	290	br7	TNL	80	RED	657
a8	DC	60	WHT	301	b8	DC	60	WHT	293	c8	DC	60	WHT	251	d8	DC	60	WHT	309	br8	TNL	80	RED	892
a9	DC	60	WHT	1.560	b9	DC	60	WHT	1.393	c9	DC	60	WHT	945						br9	TNL	80	RED	817
a10	DC	60	WHT	1.414	b10	DC	60	WHT	1.361	c10	DC	60	WHT	968						br10	TNL	80	RED	807
a11	DC	60	WHT	930	b11	DC	60	WHT	919	c11	DC	60	WHT	1.023										
a12	DC	60	WHT	1.089	b12	DC	60	WHT	1.096	c12	DC	60	WHT	1.156										
A1	TNL	140	GREEN	1.958	B1	TNL	140	BLUE	1.925	C1	TNL	80	BLUE	1.253	D1	TNL	80	BLUE	1.294	BR1	TNL	80	RED	788
A2	TNL	140	GREEN	1.894	B2	TNL	140	BLUE	1.866	C2	TNL	80	BLUE	1.180	D2	TNL	80	BLUE	1.204	BR2	TNL	80	RED	775
A3	TNL	140	GREEN	1.811	B3	TNL	140	BLUE	1.652	C3	TNL	80	BLUE	1.176	D3	TNL	80	BLUE	1.200					
A4	TNL	140	GREEN	1.769	B4	TNL	140	BLUE	1.565	C4	TNL	80	BLUE	1.054	D4	TNL	80	BLUE	1.065					
					B5	TNL	80	BLUE	1.757	C5	TNL	140	BLUE	1.521										
					ST1	TNL	80	RED	879															
					ST2	TNL	80	RED	612															
					B6	TNL	220	BLUE	1.391	C6	TNL	220	BLUE	1.250										
2A1	TNL	280	GREEN	3.989	2B1	TNL	280	BLUE	3.927	2C1	TNL	280	BLUE	4.750						2BR1	TNL	80	RED	2.986
2A2	TNL	280	GREEN	4.043	2B2	TNL	280	BLUE	2.787	2C2	TNL	400	BLUE	3.548						2BR2	TNL	80	RED	2.346
2A3	TNL	140	GREEN	4.372	2ST	TNL	80	RED	3.762										2BR3	TNL	80	RED	2.718	
																			BRMAIN	TNL	280	RED	2.835	
																			POINT:				2.635	

LINES TECHNICAL DATA

HOOK 4					25																			
REF.	MAT.	KG	COLOR	m/m	REF.	MAT.	KG	COLOR	m/m	REF.	MAT.	KG	COLOR	m/m	REF.	MAT.	KG	COLOR	m/m	REF.	MAT.	KG	COLOR	m/m
A					B					C					D					BRAKE				
a1	DC	60	WHT	376	b1	DC	60	WHT	370	c1	DC	60	WHT	321	d1	DC	60	WHT	392	br1	TNL	80	RED	1.578
a2	DC	60	WHT	311	b2	DC	60	WHT	306	c2	DC	60	WHT	229	d2	DC	60	WHT	303	br2	TNL	80	RED	1.235
a3	DC	60	WHT	334	b3	DC	60	WHT	328	c3	DC	60	WHT	256	d3	DC	60	WHT	333	br3	TNL	80	RED	1.061
a4	DC	60	WHT	356	b4	DC	60	WHT	352	c4	DC	60	WHT	305	d4	DC	60	WHT	378	br4	TNL	80	RED	781
a5	DC	60	WHT	349	b5	DC	60	WHT	347	c5	DC	60	WHT	300	d5	DC	60	WHT	368	br5	TNL	80	RED	645
a6	DC	60	WHT	306	b6	DC	60	WHT	290	c6	DC	60	WHT	218	d6	DC	60	WHT	282	br6	TNL	80	RED	615
a7	DC	60	WHT	296	b7	DC	60	WHT	294	c7	DC	60	WHT	234	d7	DC	60	WHT	302	br7	TNL	80	RED	685
a8	DC	60	WHT	314	b8	DC	60	WHT	306	c8	DC	60	WHT	261	d8	DC	60	WHT	323	br8	TNL	80	RED	929
a9	DC	60	WHT	1.626	b9	DC	60	WHT	1.452	c9	DC	60	WHT	985						br9	TNL	80	RED	852
a10	DC	60	WHT	1.474	b10	DC	60	WHT	1.419	c10	DC	60	WHT	1.009						br10	TNL	80	RED	842
a11	DC	60	WHT	970	b11	DC	60	WHT	958	c11	DC	60	WHT	1.066										
a12	DC	60	WHT	1.135	b12	DC	60	WHT	1.143	c12	DC	60	WHT	1.205										
A1	TNL	140	GREEN	2.040	B1	TNL	140	BLUE	2.007	C1	TNL	80	BLUE	1.305	D1	TNL	80	BLUE	1.344	BR1	TNL	80	RED	821
A2	TNL	140	GREEN	1.977	B2	TNL	140	BLUE	1.947	C2	TNL	80	BLUE	1.231	D2	TNL	80	BLUE	1.263	BR2	TNL	80	RED	808
A3	TNL	140	GREEN	1.887	B3	TNL	140	BLUE	1.723	C3	TNL	80	BLUE	1.226	D3	TNL	80	BLUE	1.251					
A4	TNL	140	GREEN	1.845	B4	TNL	140	BLUE	1.632	C4	TNL	80	BLUE	1.099	D4	TNL	80	BLUE	1.111					
					B5	TNL	80	BLUE	1.832	C5	TNL	140	BLUE	1.579										
					ST1	TNL	80	RED	916															
					ST2	TNL	80	RED	638															
					B6	TNL	220	BLUE	1.457	C6	TNL	220	BLUE	1.303										
2A1	TNL	280	GREEN	4.180	2B1	TNL	280	BLUE	4.120	2C1	TNL	280	BLUE	4.982						2BR1	TNL	80	RED	3.110
2A2	TNL	280	GREEN	4.237	2B2	TNL	280	BLUE	2.926	2C2	TNL	400	BLUE	3.730						2BR2	TNL	80	RED	2.446
2A3	TNL	140	GREEN	4.581	2ST	TNL	80	RED	3.938											2BR3	TNL	80	RED	2.812
																				BRMAIN	TNL	280	RED	2.935
																				POINT:				2.735

LINES TECHNICAL DATA

HOOK 4

27

REF.	MAT.	KG	COLOR	m/m	REF.	MAT.	KG	COLOR	m/m	REF.	MAT.	KG	COLOR	m/m	REF.	MAT.	KG	COLOR	m/m	REF.	MAT.	KG	COLOR	m/m
A					B					C					D					BRAKE				
a1	DC	60	WHT	390	b1	DC	60	WHT	385	c1	DC	60	WHT	334	d1	DC	60	WHT	407	br1	TNL	80	RED	1.640
a2	DC	60	WHT	323	b2	DC	60	WHT	318	c2	DC	60	WHT	238	d2	DC	60	WHT	316	br2	TNL	80	RED	1.284
a3	DC	60	WHT	347	b3	DC	60	WHT	341	c3	DC	60	WHT	265	d3	DC	60	WHT	346	br3	TNL	80	RED	1.104
a4	DC	60	WHT	370	b4	DC	60	WHT	366	c4	DC	60	WHT	317	d4	DC	60	WHT	393	br4	TNL	80	RED	812
a5	DC	60	WHT	363	b5	DC	60	WHT	361	c5	DC	60	WHT	312	d5	DC	60	WHT	382	br5	TNL	80	RED	670
a6	DC	60	WHT	319	b6	DC	60	WHT	301	c6	DC	60	WHT	227	d6	DC	60	WHT	293	br6	TNL	80	RED	639
a7	DC	60	WHT	308	b7	DC	60	WHT	306	c7	DC	60	WHT	243	d7	DC	60	WHT	314	br7	TNL	80	RED	712
a8	DC	60	WHT	326	b8	DC	60	WHT	318	c8	DC	60	WHT	272	d8	DC	60	WHT	335	br8	TNL	80	RED	965
a9	DC	60	WHT	1.690	b9	DC	60	WHT	1.509	c9	DC	60	WHT	1.023						br9	TNL	80	RED	886
a10	DC	60	WHT	1.532	b10	DC	60	WHT	1.475	c10	DC	60	WHT	1.049						br10	TNL	80	RED	876
a11	DC	60	WHT	1.008	b11	DC	60	WHT	995	c11	DC	60	WHT	1.107										
a12	DC	60	WHT	1.180	b12	DC	60	WHT	1.187	c12	DC	60	WHT	1.252										

A1	TNL	140	GREEN	2.120	B1	TNL	140	BLUE	2.085	C1	TNL	140	BLUE	1.356	D1	TNL	80	BLUE	1.396	BR1	TNL	80	RED	853
A2	TNL	140	GREEN	2.056	B2	TNL	140	BLUE	2.025	C2	TNL	140	BLUE	1.281	D2	TNL	80	BLUE	1.307	BR2	TNL	80	RED	841
A3	TNL	140	GREEN	1.961	B3	TNL	140	BLUE	1.790	C3	TNL	80	BLUE	1.273	D3	TNL	80	BLUE	1.304					
A4	TNL	140	GREEN	1.918	B4	TNL	140	BLUE	1.696	C4	TNL	80	BLUE	1.143	D4	TNL	80	BLUE	1.160					
					B5	TNL	80	BLUE	1.905	C5	TNL	140	BLUE	1.650										
					ST1	TNL	80	RED	952															
					ST2	TNL	80	RED	662															
					B6	TNL	220	BLUE	1.513	C6	TNL	220	BLUE	1.353										

2A1	TNL	280	GREEN	4.366	2B1	TNL	280	BLUE	4.303	2C1	TNL	400	BLUE	5.200						2BR1	TNL	80	RED	3.230
2A2	TNL	280	GREEN	4.428	2B2	TNL	280	BLUE	3.050	2C2	TNL	400	BLUE	3.893						2BR2	TNL	80	RED	2.543
2A3	TNL	140	GREEN	4.787	2ST	TNL	80	RED	4.117										2BR3	TNL	80	RED	2.926	
																			BRMAIN	TNL	280	RED	3.033	
																			POINT:				2.833	

LINES TECHNICAL DATA

HOOK 4					29																			
REF.	MAT.	KG	COLOR	m/m	REF.	MAT.	KG	COLOR	m/m	REF.	MAT.	KG	COLOR	m/m	REF.	MAT.	KG	COLOR	m/m	REF.	MAT.	KG	COLOR	m/m
A					B					C					D					BRAKE				
a1	DC	100	WHT	405	b1	DC	100	WHT	399	c1	DC	60	WHT	346	d1	DC	60	WHT	422	br1	TNL	80	RED	1.700
a2	DC	100	WHT	335	b2	DC	100	WHT	330	c2	DC	60	WHT	247	d2	DC	60	WHT	327	br2	TNL	80	RED	1.331
a3	DC	100	WHT	359	b3	DC	100	WHT	353	c3	DC	60	WHT	275	d3	DC	60	WHT	359	br3	TNL	80	RED	1.145
a4	DC	100	WHT	384	b4	DC	100	WHT	379	c4	DC	60	WHT	328	d4	DC	60	WHT	407	br4	TNL	80	RED	841
a5	DC	100	WHT	376	b5	DC	100	WHT	374	c5	DC	60	WHT	323	d5	DC	60	WHT	396	br5	TNL	80	RED	695
a6	DC	60	WHT	330	b6	DC	60	WHT	313	c6	DC	60	WHT	235	d6	DC	60	WHT	304	br6	TNL	80	RED	662
a7	DC	60	WHT	319	b7	DC	60	WHT	317	c7	DC	60	WHT	251	d7	DC	60	WHT	325	br7	TNL	80	RED	738
a8	DC	60	WHT	338	b8	DC	60	WHT	329	c8	DC	60	WHT	282	d8	DC	60	WHT	348	br8	TNL	80	RED	1.000
a9	DC	60	WHT	1.752	b9	DC	60	WHT	1.564	c9	DC	60	WHT	1.060						br9	TNL	80	RED	918
a10	DC	60	WHT	1.588	b10	DC	60	WHT	1.529	c10	DC	60	WHT	1.088						br10	TNL	80	RED	908
a11	DC	60	WHT	1.045	b11	DC	60	WHT	1.031	c11	DC	60	WHT	1.148										
a12	DC	60	WHT	1.223	b12	DC	60	WHT	1.231	c12	DC	60	WHT	1.298										
A1	TNL	220	GREEN	2.196	B1	TNL	220	BLUE	2.160	C1	TNL	140	BLUE	1.405	D1	TNL	80	BLUE	1.446	BR1	TNL	80	RED	883
A2	TNL	220	GREEN	2.132	B2	TNL	220	BLUE	2.100	C2	TNL	140	BLUE	1.329	D2	TNL	80	BLUE	1.361	BR2	TNL	80	RED	872
A3	TNL	140	GREEN	2.032	B3	TNL	140	BLUE	1.855	C3	TNL	80	BLUE	1.319	D3	TNL	80	BLUE	1.346					
A4	TNL	140	GREEN	1.989	B4	TNL	140	BLUE	1.759	C4	TNL	80	BLUE	1.185	D4	TNL	80	BLUE	1.197					
					B5	TNL	80	BLUE	1.970	C5	TNL	140	BLUE	1.705										
					ST1	TNL	80	RED	986															
					ST2	TNL	80	RED	686															
					B6	TNL	220	BLUE	1.560	C6	TNL	220	BLUE	1.402										
2A1	TNL	400	GREEN	4.539	2B1	TNL	400	BLUE	4.478	2C1	TNL	400	BLUE	5.408						2BR1	TNL	80	RED	3.345
2A2	TNL	280	GREEN	4.611	2B2	TNL	280	BLUE	3.207	2C2	TNL	400	BLUE	4.046						2BR2	TNL	80	RED	2.635
2A3	TNL	140	GREEN	4.973	2ST	TNL	80	RED	4.290										2BR3	TNL	80	RED	3.031	
																				BRMAIN	TNL	280	RED	3.150
																				POINT:				2.950

NIVIUK HOOK 4 21

LINES HEIGHT m/m

	A	B	C	D	br
1	5994	5906	5998	6097	6751
2	5933	5846	5912	6015	6435
3	5893	5808	5867	5966	6274
4	5912	5829	5911	6006	6154
5	5880	5843	5934	6019	6028
6	5841	5791	5859	5940	5988
7	5791	5711	5756	5829	6051
8	5806	5721	5781	5848	5874
9	5628	5627	5696		5803
10	5489	5595	5718		5793
11	5286	5265	5364		
12	5184	5180	5238		

RISERS LENGHT m/m

	A	A'	B	C	
	470	470	470	470	STANDARD
	340	360	380	470	ACCELERATED

NIVIUK HOOK 4 23

LINES HEIGHT m/m

	A	B	C	D	br
1	6298	6197	6301	6410	7125
2	6234	6135	6212	6324	6795
3	6194	6098	6165	6264	6628
4	6214	6120	6212	6306	6504
5	6184	6148	6247	6336	6372
6	6143	6093	6168	6254	6332
7	6091	6010	6061	6138	6398
8	6108	6021	6088	6157	6235
9	5927	5922	6004		6160
10	5781	5890	6027		6150
11	5566	5550	5654		
12	5458	5460	5520		

RISERS LENGHT m/m

	A	A'	B	C	
	470	470	470	470	STANDARD
	340	360	380	470	ACCELERATED

NIVIUK HOOK 4 25

LINES HEIGHT m/m

	A	B	C	D	br
1	6586	6488	6600	6705	7413
2	6521	6424	6508	6616	7070
3	6481	6386	6461	6565	6896
4	6503	6410	6510	6610	6773
5	6463	6445	6548	6641	6637
6	6420	6388	6466	6555	6594
7	6368	6301	6355	6435	6664
8	6386	6313	6382	6456	6466
9	6202	6210	6291		6389
10	6050	6177	6315		6379
11	5819	5812	5920		
12	5706	5719	5781		

RISERS LENGHT m/m

	A	A'	B	C	
	470	470	470	470	STANDARD
	340	360	380	470	ACCELERATED

NIVIUK HOOK 4 27

LINES HEIGHT m/m

	A	B	C	D	br
1	6866	6763	6880	6993	7688
2	6799	6696	6784	6902	7332
3	6759	6659	6736	6843	7152
4	6782	6684	6788	6890	7026
5	6742	6704	6826	6927	6884
6	6698	6644	6741	6838	6841
7	6644	6555	6627	6715	6914
8	6662	6567	6656	6736	6709
9	6472	6459	6561		6630
10	6314	6425	6587		6620
11	6072	6059	6176		
12	5954	5961	6031		

RISERS LENGHT m/m

	A	A'	B	C	
	470	470	470	470	STANDARD
	340	360	380	470	ACCELERATED

LINES HEIGHT m/m

	A	B	C	D	br
1	7130	7027	7144	7261	7990
2	7060	6958	7045	7166	7621
3	7020	6921	6997	7113	7435
4	7045	6947	7050	7161	7304
5	7009	6981	7070	7175	7158
6	6963	6920	6982	7083	7114
7	6909	6828	6864	6955	7190
8	6928	6840	6895	6978	6976
9	6720	6731	6796		6894
10	6556	6696	6824		6884
11	6311	6297	6414		
12	6189	6197	6264		

RISERS LENGHT m/m

	A	A'	B	C	
	470	470	470	470	STANDARD
	340	360	380	470	ACCELERATED

SUSPENSION TECHNICAL DATA

HOOK 4

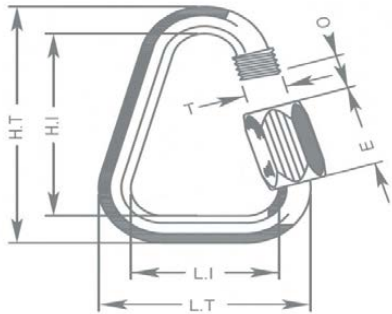
MATERIAL CODE		DC	DC	TNL	TNL	TNL	TNL	TNL
STRENGTH CODE		060	100	080	140	220	280	400
DIAMETER m/m	Ø	0,6	0,8	1,1	1,4	1,6	1,8	2,3
CORE MATERIAL		DYNEEMA	DYNEEMA	TECHNORA	TECHNORA	TECHNORA	TECHNORA	TECHNORA
SLEEVE MATERIAL		NO	NO	POLYESTER	POLYESTER	POLYESTER	POLYESTER	POLYESTER
WEIGHT G/M	TOTAL	0,24	0,42	1,1	1,96	2,35	2,7	4
BREAKING STRENGTH	MINIMUM	60	100	80	140	220	280	314
	MAXIMUM	84	110	92	160	250	320	360
STRENGTH AFTER								
5.000 BENDING	TEST EN	74	99	36,7	76,1	114,2	134,7	184,4
CYCLES								
ELONGATION AT	5 DAN EN %			0,3	0,2	0,2	0,2	0,05
	10 daN en %	0,43	0,36	0,5	0,3	0,3	0,3	0,1
	15 DAN EN %			0,7	0,5	0,5	0,4	0,2
	20 DAN EN %			1	0,6	0,6	0,4	0,2
	25 DAN EN %			1,3	0,8	0,7	0,5	0,3
	30 DAN EN %	1,2	1	2,3	1,5	1,2	0,9	0,6
	75 DAN EN %			2,8	2,3	1,8	1,3	0,8
	100 DAN EN %				2,7	2,2	1,7	1,1
	125 daN en %				3,2	2,7	2	1,4
	150 DAN EN %					3	2,3	1,7
	175 DAN EN %					3,3	2,7	2
	200 DAN EN %					3,8	2,8	2,2
	250 DAN EN %							
ELONGATION MAX. BREAKING STRENGTH %		3,2	3,4	3	3,4	4	4,1	4,6

MAILLON TECHNICAL DATA

DESCRIPTION

MAILLON	DELTA
CODE	4
MATERIAL	STAINLESS STEEL
SIZE	4,3 m/m
WEIGHT	12 G/PIECE

TECHNICAL SPECIFICATIONS



DIMENSIONS	m/m
L.T.	28
L.I.	20
H.T.	38
H.I.	30
O	4
E	11
T	4
LOAD	KG
WORKING LIMIT	150
BREAKING	750

MATERIAL

AISI 304 STAINLESS STEEL	STANDARD
--------------------------	----------

CLOSING APPLIED BY MANUAL & ENTIRE SCREWING OF THE NUT
TO GUARANTEE THE HIGHEST SAFETY (NO THREAD SHOULD BE OBVIOUS)

SYSTEMATIC CONTROL OF MAILLON QUICK-LINKS BEFORE EVERY FLIGHT

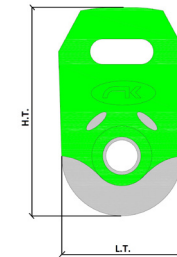
PULLEY TECHNICAL DATA

DESCRIPTION

PULLEY	20 m/m
CODE	ID018041
MATERIAL	STAINLESS STEEL
	NYLON
	CARBON ACETAL
BEARING	DELRIN®
WEIGHT	14 G/PIECE

TECHNICAL SPECIFICATIONS

DIMENSIONS	m/m
L.T.	20
H.T.	33
Ø	5 MAX
LOAD	KG
WORKING LIMIT	200
BREAKING	400



THREAD TECHNICAL DATA**SAIL MAKING**

NAME	SERAFIL
N° OF REFERENCE	60
MATERIAL	POLYESTER
TYPE OF FINISH	SILK
LINEAR DENSITY	NM 61 / 3 (DTEX 163 * 3)
BREAKING STRENGTH	3,000 CN
ELONGATION	17,00%

SERAFIL PROPERTIES

SOLIDITY ARTIFICIAL LIGTH	ISO 105 B02 > 5 - 6
SOLIDITY SWEAT	ISO 105 E04 > 4
SOLIDITY WASHING	ISO 105 C04 > 3
SOLIDITY GRAZE IN DRY	ISO 105 X12 > 4
SOLIDITY WASHING IN DRY	ISO 105 D01 > 3 - 4

TREATMENT WATER REPELLENT	WR
---------------------------	----

RISERS MAKING

NAME	COATS BONDED C.F.P.
N° OF REFERENCE	V138
MATERIAL	POLYESTER
TYPE OF FINISH	SILK
BREAKING STRENGTH	9,5 KG
ELONGATION	19%

RISERS TECHNICAL DATA**RISERS**

N° OF REFERENCE	WD103
MATERIAL	POLYESTER & TECHNORA
WIDTH	19 M/M
THICKNESS	1,6 M/M
BREAKING STRENGTH	850 KG
ELONGATION	MAX. 12%
WEIGHT	23 G/M
COLOR	BLACK

COLOR INDICATOR

N° OF REFERENCE	IC-G 1-2
MATERIAL	POLYESTER
WIDTH	70 M/M
THICKNESS	0,80 M/M
BREAKING STRENGTH	130 DN
ELONGATION	35 %
WEIGHT	32 G * L.M.
COLOR	GREEN

LOOPS

N° OF REFERENCE	LKI - 10
MATERIAL	NYLON
WIDTH	10 M/M
BREAKING STRENGTH	84 KG
ELONGATION	30 %
WEIGHT	5,5 G/M
COLOR	WHITE

